

 Welcome to **ontec**[®]



Made in Germany



ontec[®]

Always thinking in new systems!

Introducing the company

ontec[®]





Corporate development

ontec[®]



- | | |
|------|------------------------------------------------------------------------------------------------------------------|
| 1997 | Affiliation of Puchta Steuerungstechnik and Rossner Elektrotechnik to onttec Elektro- und Steuerungstechnik GmbH |
| 1998 | Expansion of company divisions by machine construction |
| 2001 | Laying foundation stone of the new company building |
| 2002 | Entry to the new built upcompany building at Kalkofen in Naila |
| 2012 | 15 years company anniversary |
| 2013 | Rename to onttec automation GmbH
Building of a new competence centre and assembly hall |



Machine engineering

- Textile machine
- Special purpose machine
- Automation
- Handlingsystems
- Robotics
- Exercicer



Electrical engineering

- Switcher construction
- Image processing
- Electrical installation



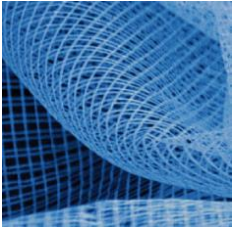
Software engineering

- Construction
- Software
- Process optimisation



Service

- Advice
- After-sales-service
- Attendance
- Maintenance
- Emergency service



Technical
textiles



Pharmaceutics



Renewable
energies



Aviation
industry

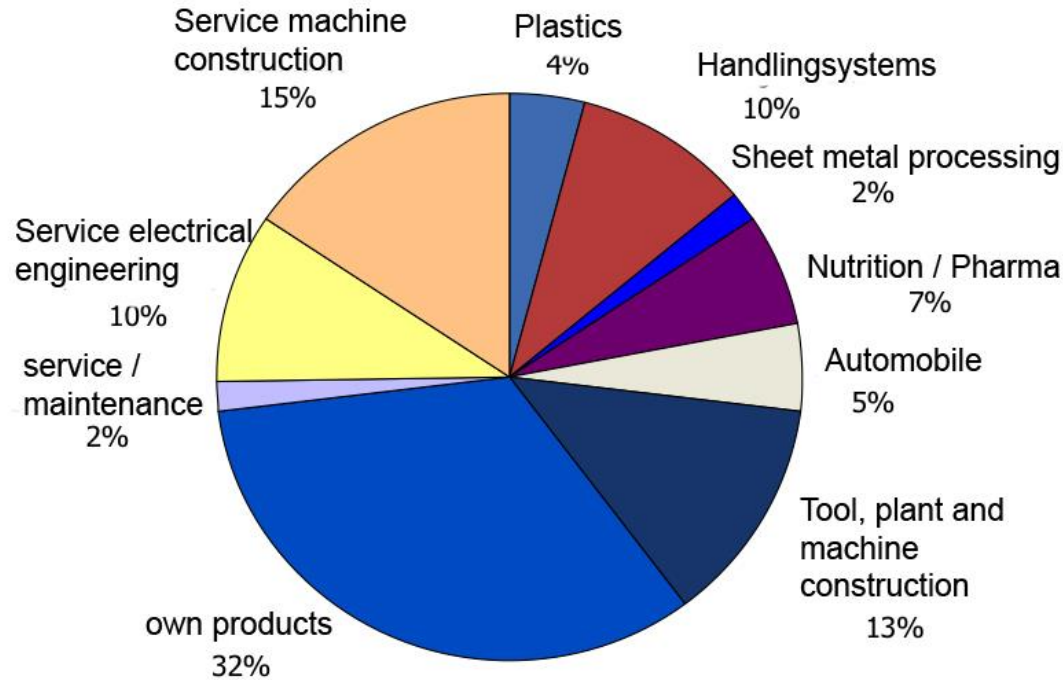


Automotive



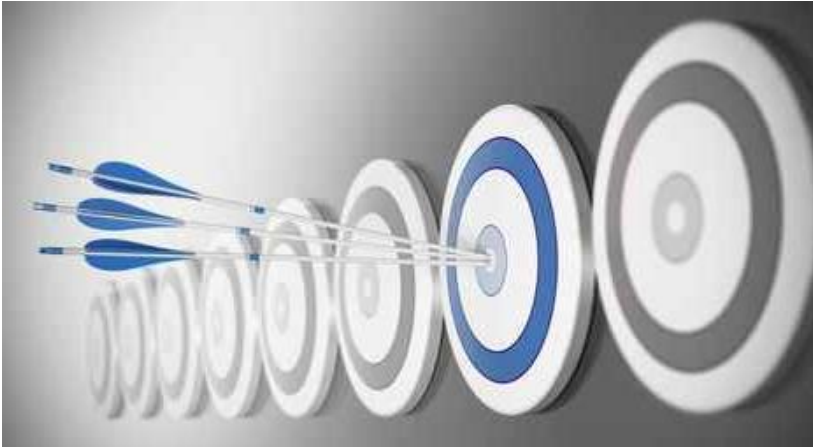
Nutrition
industry

Machine development to our customers requirements. Our service is a round-the-clock assistance!



 **We stand for...**

ontec[®]



Full service

Visions with farsightedness

Innovative individual customer solutions

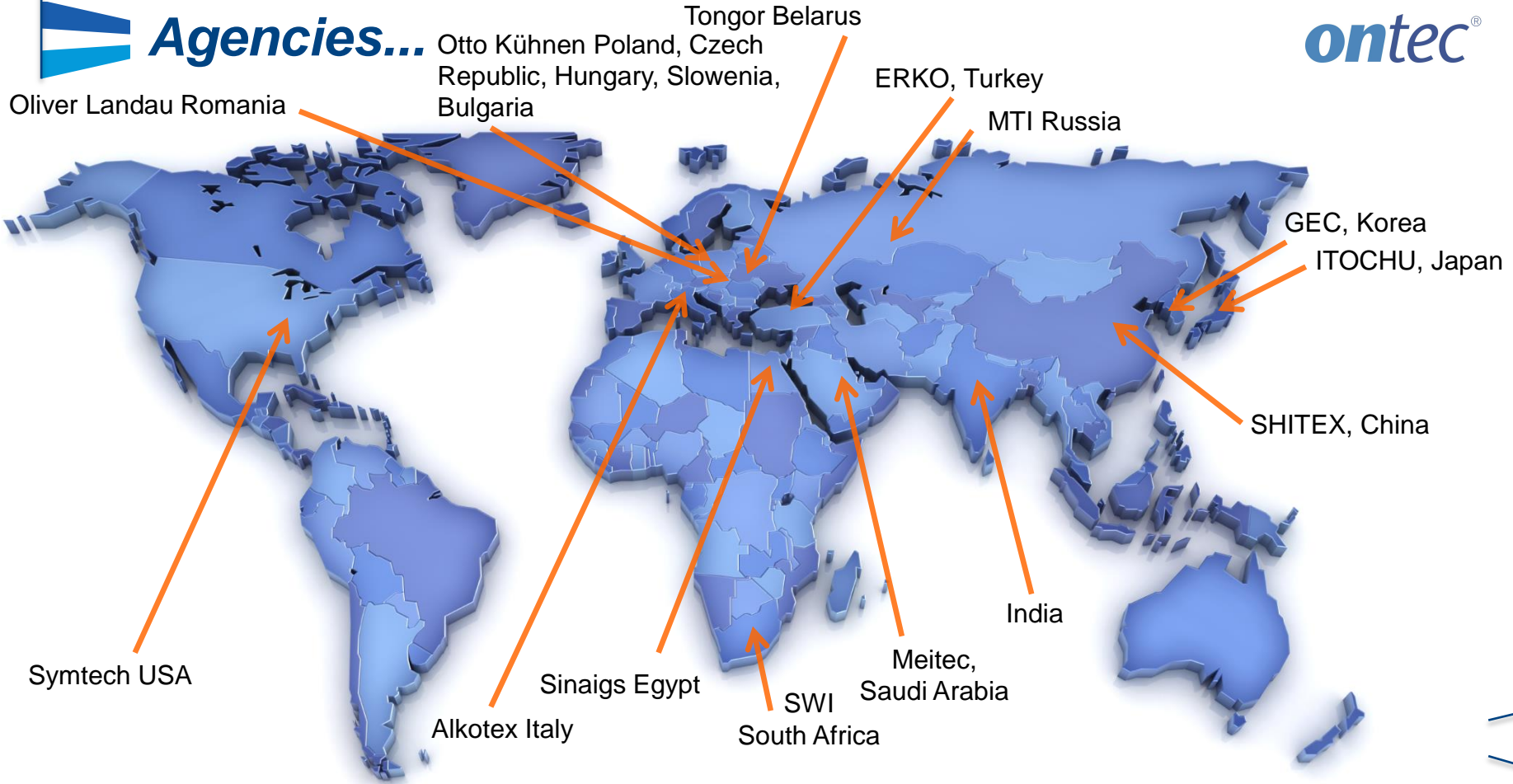
Variety of products

Precision

Know-How



Agencies...

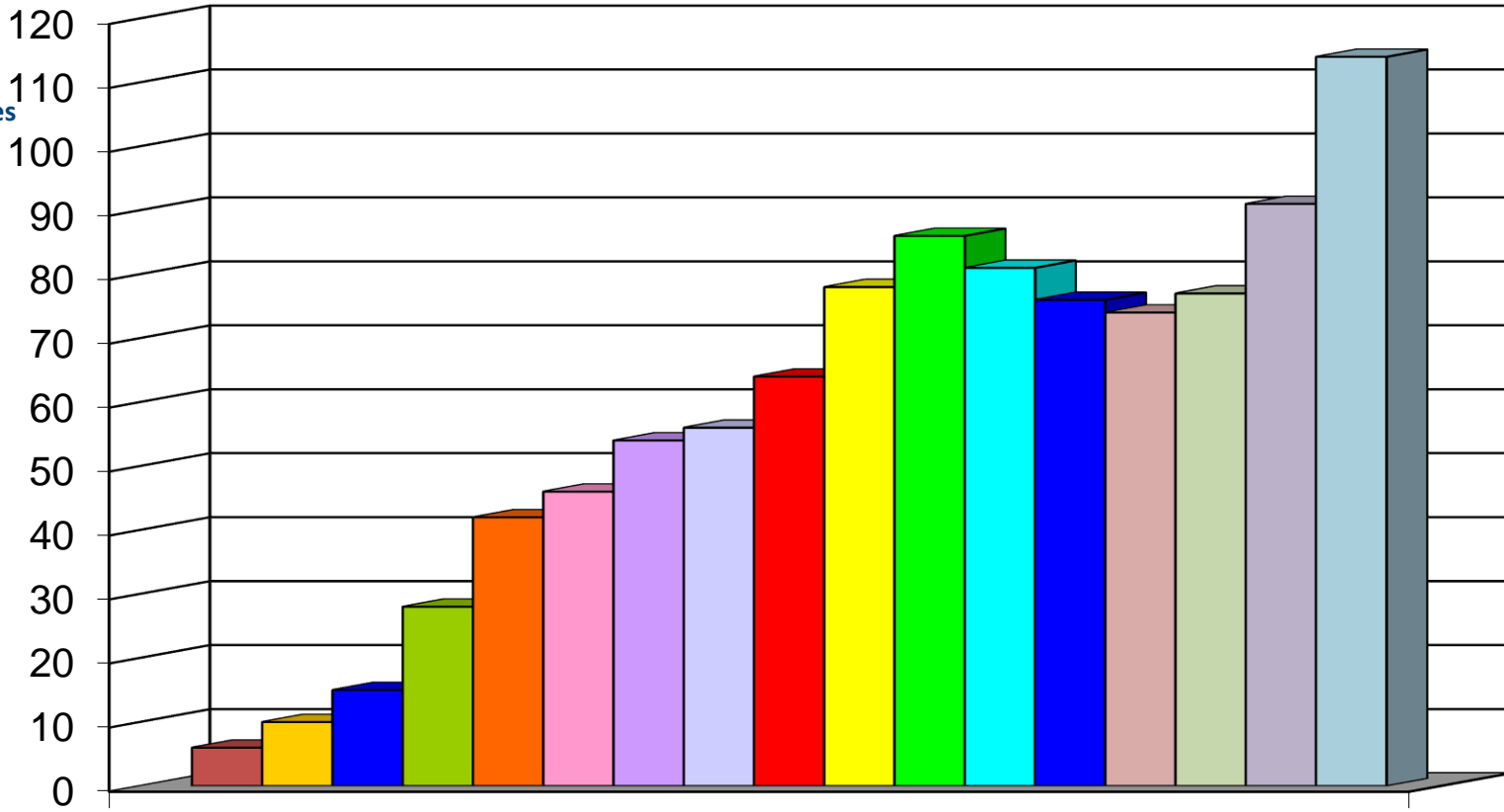




Staff

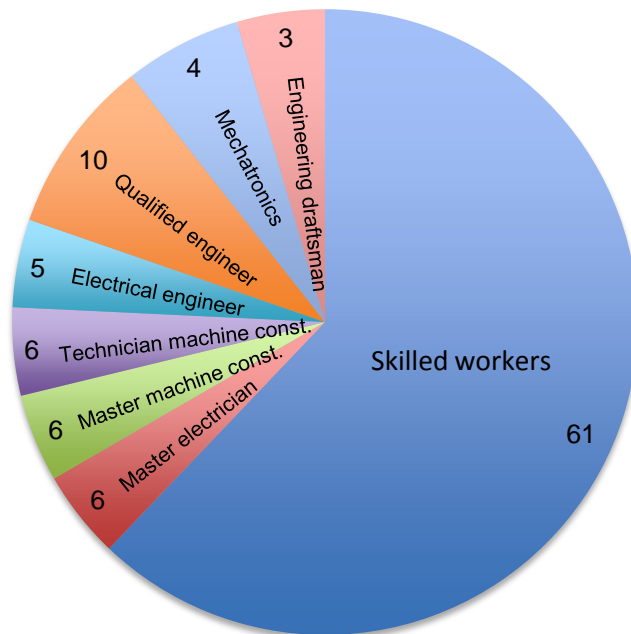


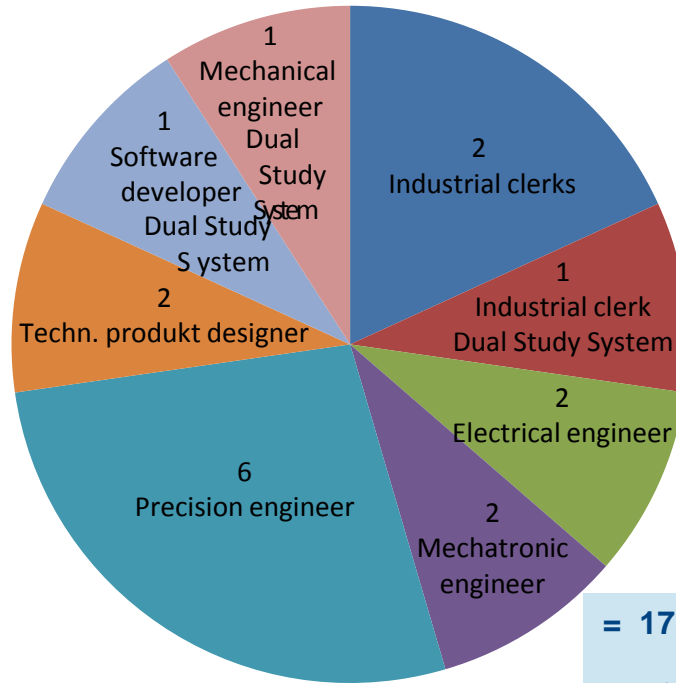
Number of employees



'97 '98 '99 '00 '01 '02 '03 '04 '05 '06 '07 '08 '09 '10 '11 '12 '13 Year

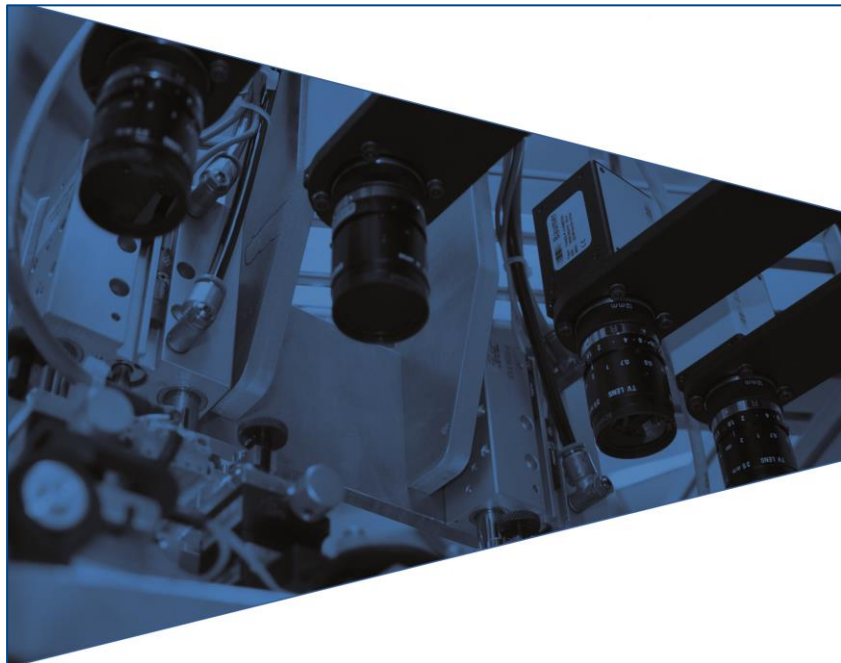
Qualifications





= 17 apprentices

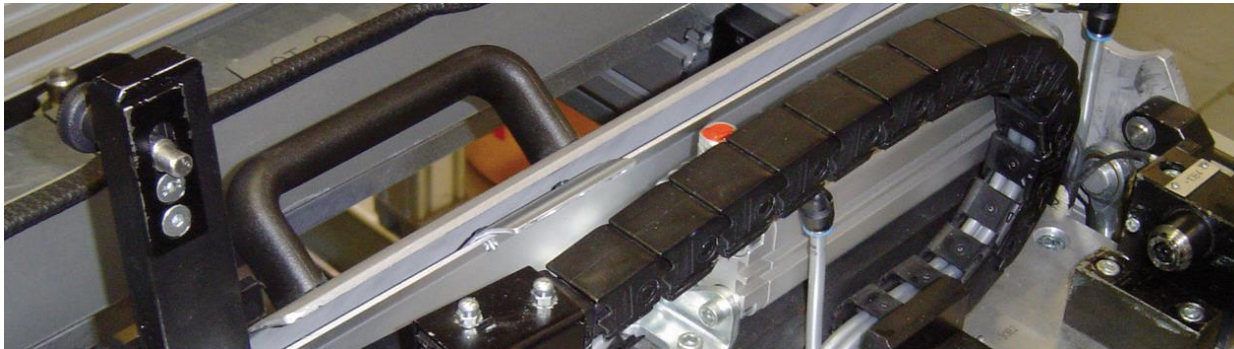
= rate of apprenticeship of approx. 15 %



ontec[®]

The onttec automation GmbH - your partner for innovative automations corresponding exactly to the customers concern.

The wide range of service in the branch of automation and special machinery provides a special solution for every single customer. Experts with a great know-how are there for you – from design to startup.

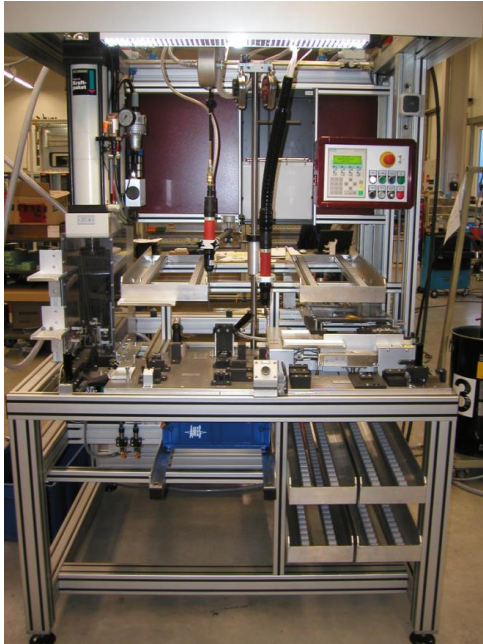




Automation | Automobile

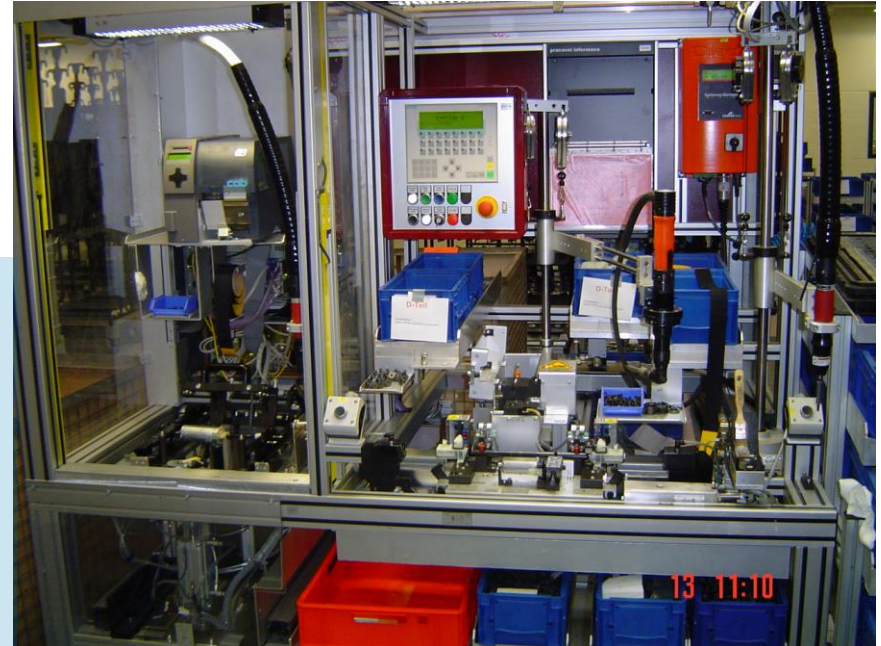
Assembly system for seat adjustment Daimler

ontec®



Assembly system
with bolt stamping

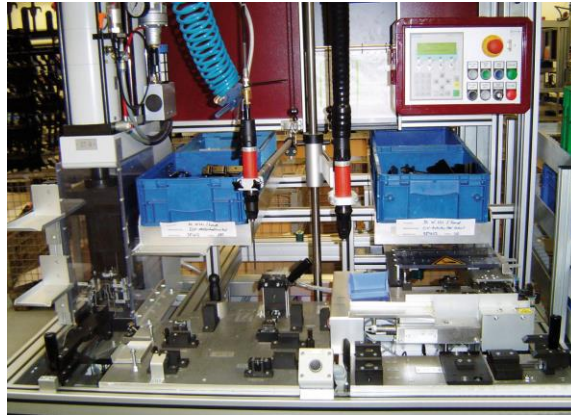
Test of
measurement of
travel and noise +
mounting station,
inclination
adjustment with
electric
screwdriver





Automation | Automobile Assembly system for seat adjustment Daimler

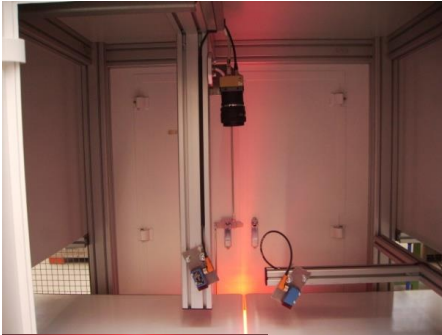
ontec[®]



Automation | Automobile

Test plant for truck mirrors

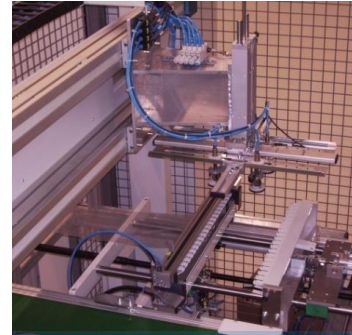
ontec®



Quality check with Line scan application



Check of mirror position by a Robot-Vision-System



Sorting and packaging



Defined-position taking and stack of mirrors

Automation | Automobile

Test station for car mirrors

ontec®



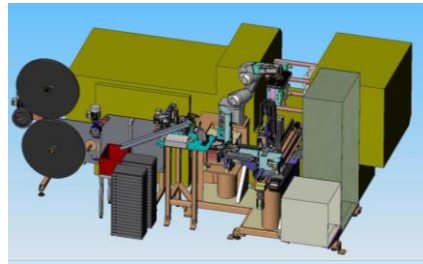
Automation | Automobile

Production of back passage sensors

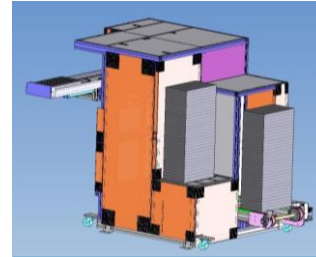
ontec®



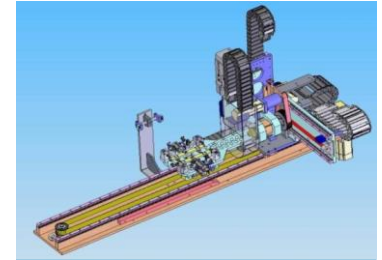
Testing system



6-axis robot



Trayhandling

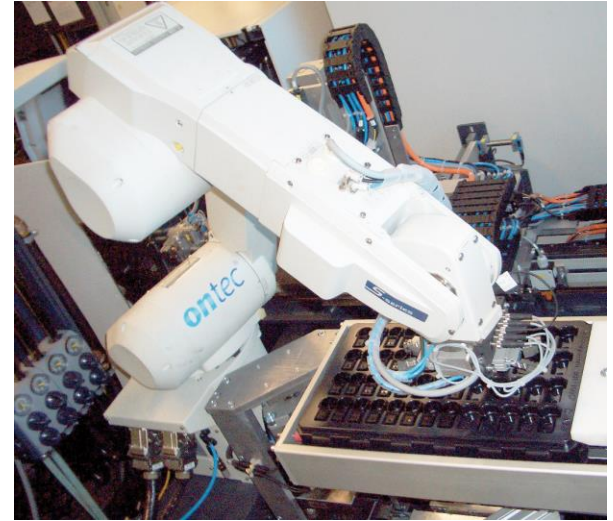
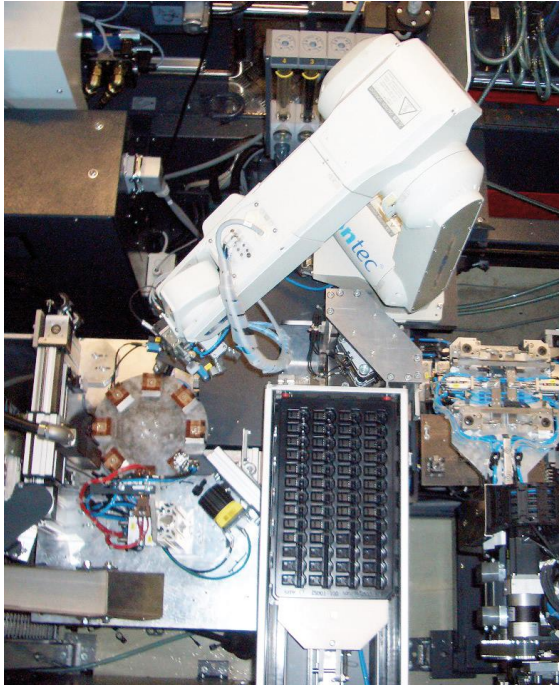


3-axis-handling



Automation | Automobile Production of back passage sensors

ontec[®]



Automation | Automobile Sensor assembly system

ontec®



Automation | Automobile Sensor assembly system

ontec[®]



Automation | Automobile

Creasing station with robot

ontec®

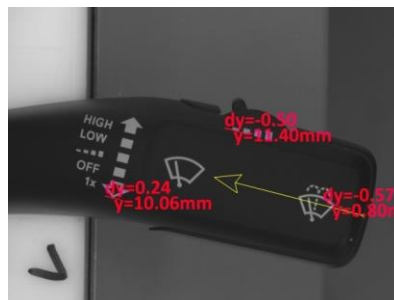
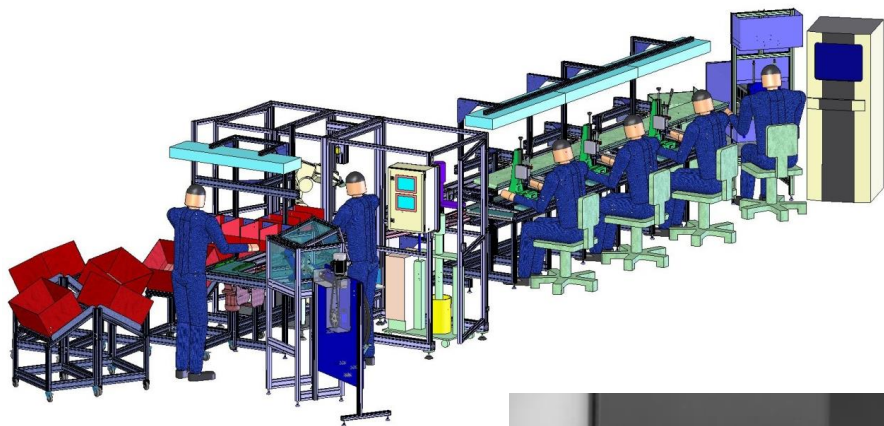


Mounting of parts for wiper and flashing indicator



Automation | Automobile Assembly line for lever mounting

ontec®





Automation | Automobile

Assembly line for wiper and flashing indicator

ontec[®]



Automation | Automobile Four fiber optics system

ontec®



Automation | Automobile

Four fiber optics system

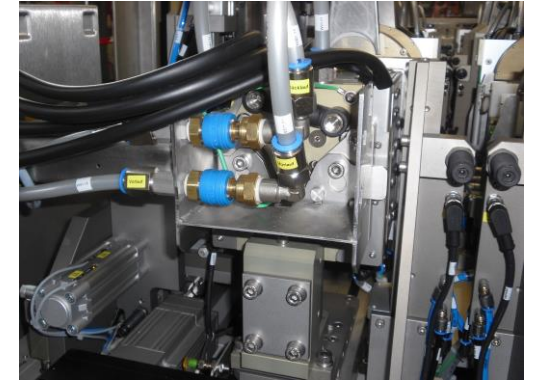
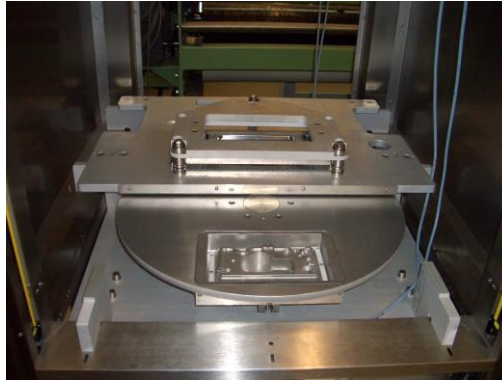
ontec®



Automation | Pharmacy

Production of dialysis cartridges

ontec®

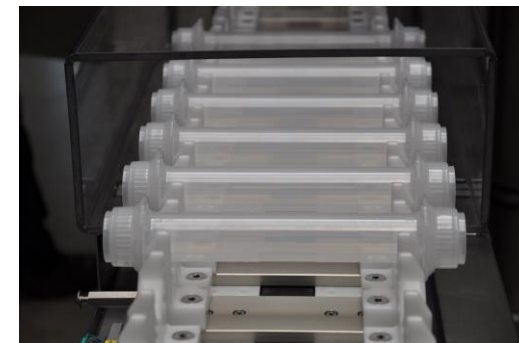




Automation | Pharmacy

Thermic merger of dialysis filters

ontec[®]

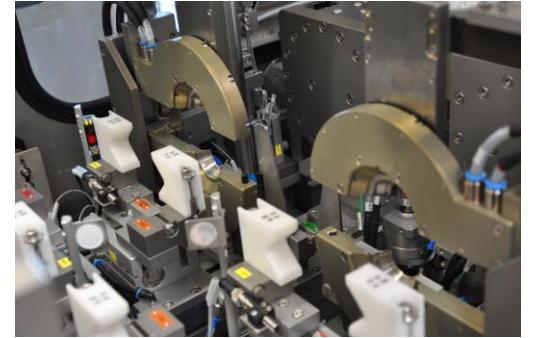
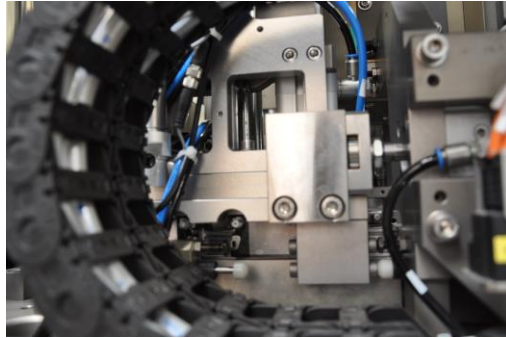




Automation | Pharmacy

Thermic merger of dialysis filters

ontec[®]





Automation | Pharmacy

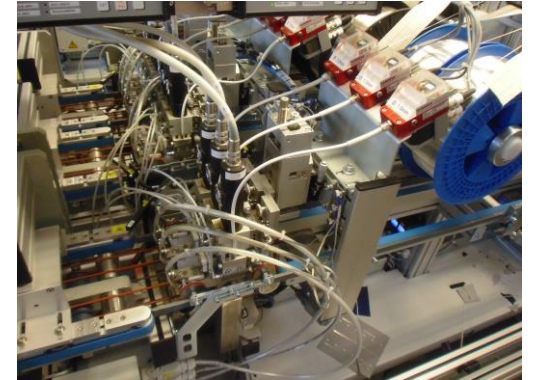
Packaging of permanent venous cannula

ontec[®]



Automation | Regenerative Energies Waferhandling

ontec®



Automation | Nutrition products

Milk processing

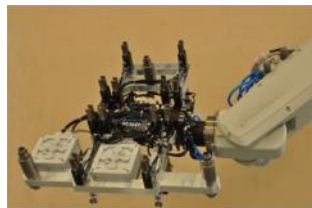
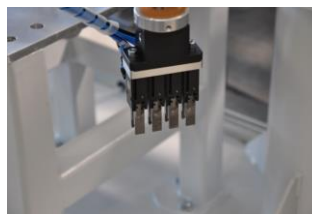
ontec[®]



Automation | Plastics Injection moulding

ontec®

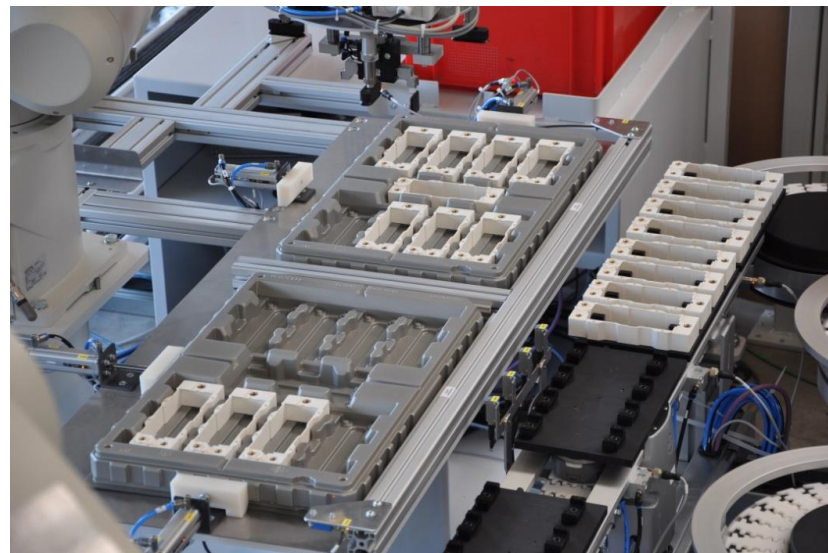
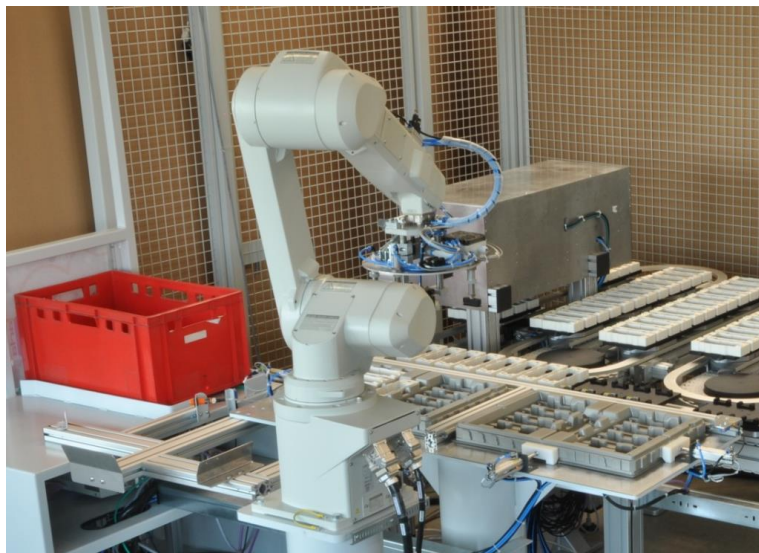
Two six-axis robots and a scararobot

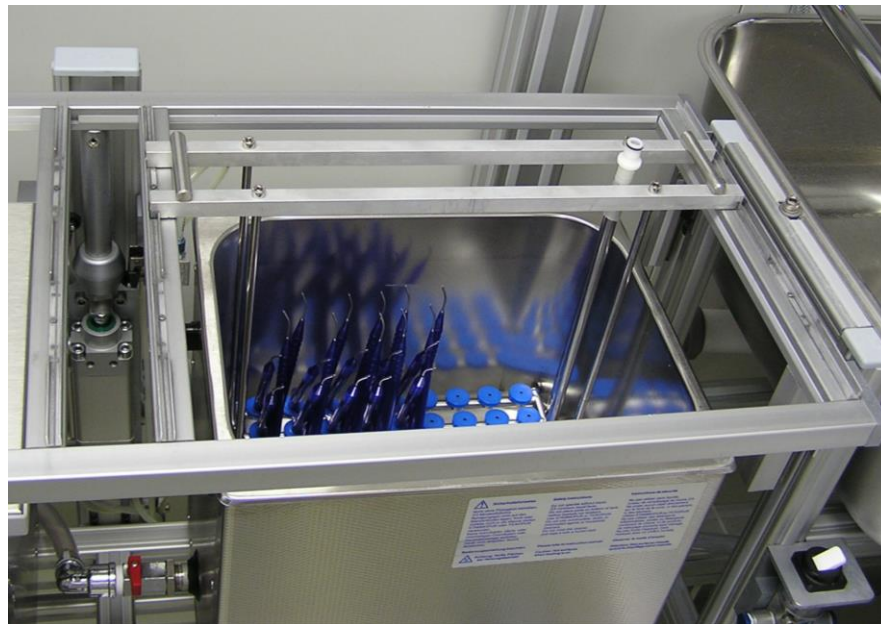




Automation | Plastics Injection moulding

ontec[®]

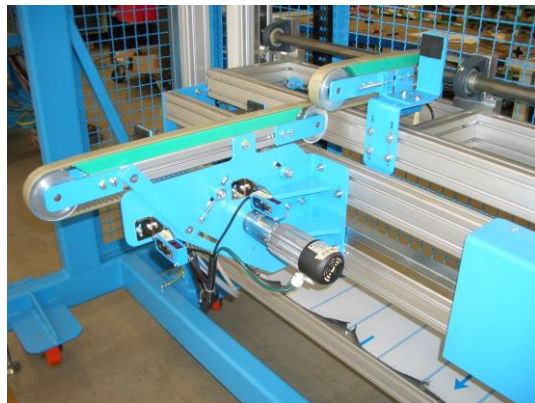




Automation | Glass production

Cross conveyor

ontec[®]





Automation | Wood processing

Board locking and termination flap of plane

ontec[®]



Automation | Pottery production

Production optimization

ontec[®]





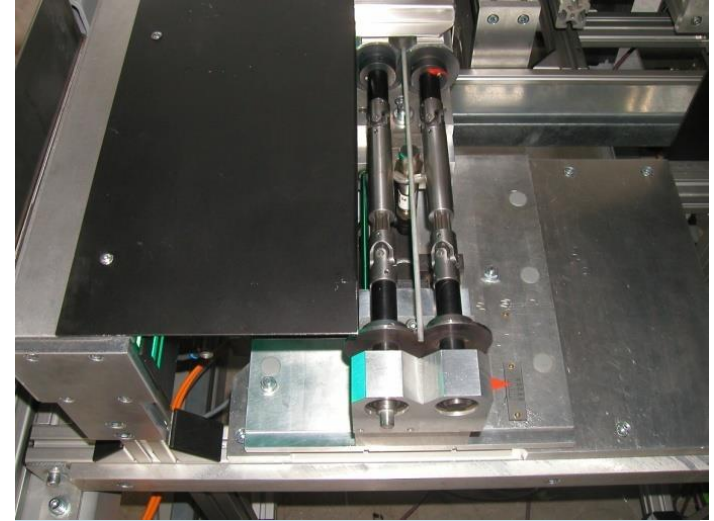
Automation | Steel industry

Round bar measurement by AOI-system

ontec[®]



Optical true running control of sintered hard metal sticks
Radial run-out less than 0,1 mm



Testing station with cutting motor, rotary
encoder and high speed camera

Our sales department

ontec[®]

We are looking forward to your inquiry!



Veronica Lommer
Sales assistant

VL@ontec.de
+49 9282 931 141



Jürgen Lämmerhirt
Authorized signatory

JL@ontec.de
+49 9282 931 180



Volker Rossner
Managing director

VR@ontec.de
+49 9282 931 120



Harald Prantl
Managing director

HPR@ontec.de
+49 9282 931 150



Christopher Ukatz
Technical sales
department

CU@ontec.de
+49 9282 931 151



Manuel Rank
Technical sales
department

MRA@ontec.de
+49 9282 931 153



Many thanks for your attention!